

PR

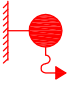


PIANTA PIANO RIALZATO

V.le G. Mazzini



Stazione
F.S. 

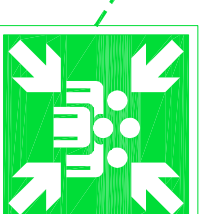
LEGENDA

-  IDRANTE A MURO UNI 45
-  ESTINTORE PORTATILE
-  PORTA REI 120
-  QUADRO ELETTRICO

 TU SEI QUI

CHIAMATA DI EMERGENZA

112



PUNTO DI RACCOLTA
(marciapiede lato opposto ingresso)

PIANO USCITE EMERGENZA

PR - PIANO RIALZATO

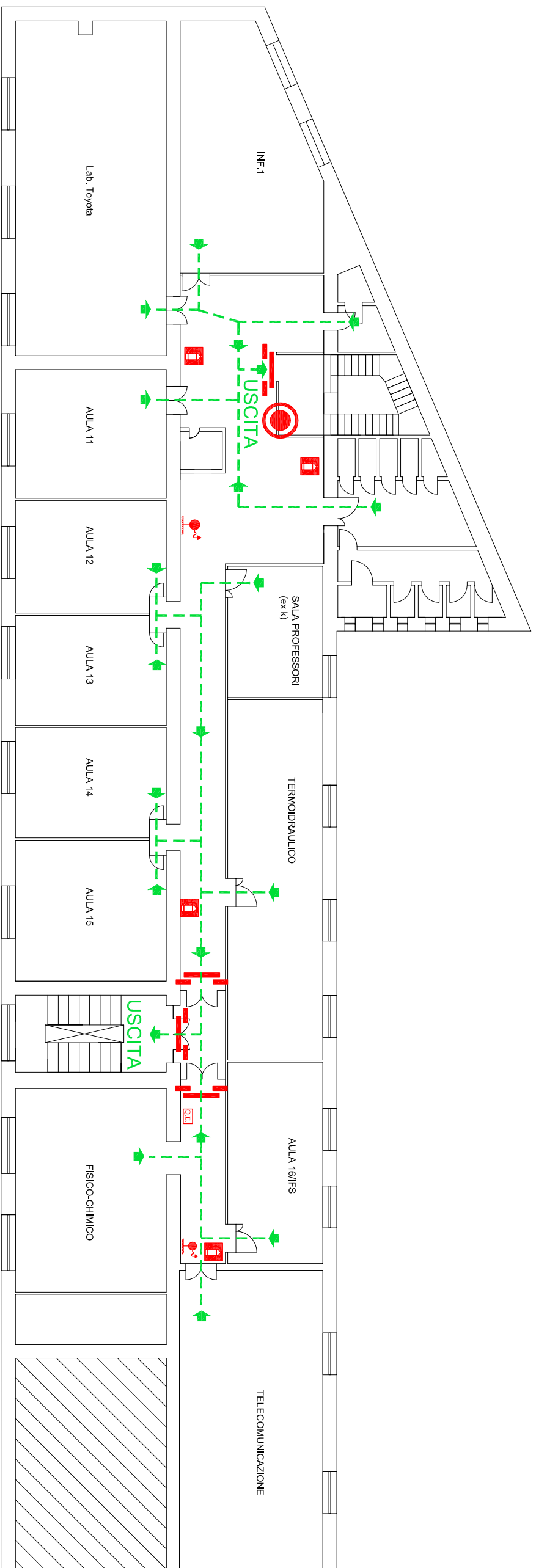
D.S. Prof.ssa ANNA VICIDOMINI - RSPP Dott. Ing. Pierangelo D'Antonio


SETTEMBRE 2020

ISTITUTO STATALE IPIAS "ORAZIO OLIVIERI"
Viale Mazzini 65, Tivoli 00019 - Tel. 06.121125445 - rmri08000@istruzione.it - www.ipiasolivieri.edu.it

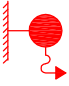



P1

PIANTA PIANO PRIMO



Stazione
F.S. 

LEGENDA

-  IDRANTE A MURO UNI 45
-  ESTINTORE PORTATILE
-  PORTA REI 120
-  QUADRO ELETTRICO



TU SEI QUI

CHIAMATA DI EMERGENZA

112

ISTITUTO STATALE IPIAS "ORAZIO OLIVIERI"
Viale Mazzini 65, Tivoli 00019 - Tel. 06.121125445 - rmri08000g@istruzione.it - www.ipiasolivieri.edu.it

PIANO USCITE EMERGENZA

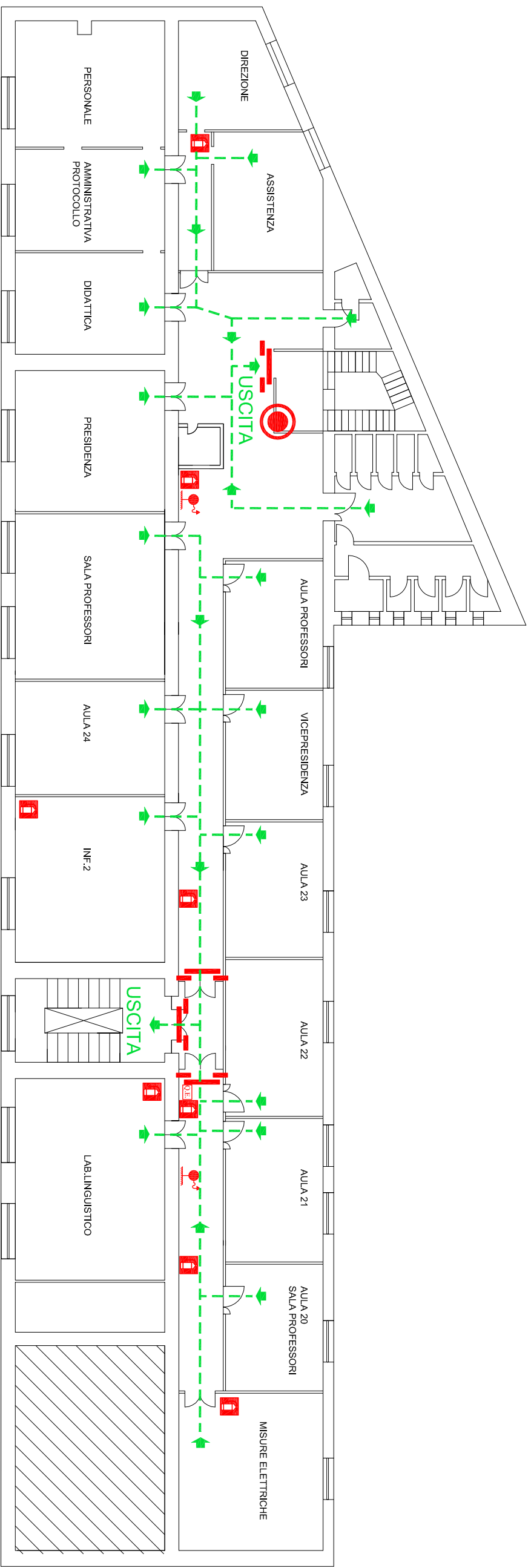
P1 - PIANO PRIMO

D.S. Prof.ssa ANNA VICIDOMINI - RSPP Dott. Ing. Pierangelo D'Antonio

SETTEMBRE 2020

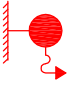



P2

PIANTA PIANO SECONDO



Stazione
F.S. 

LEGENDA

-  IDRANTE A MURO UNI 45
-  ESTINTORE PORTATILE
-  PORTA REI 120
-  QUADRO ELETTRICO

 TU SEI QUI

CHIAMATA DI EMERGENZA

112

ISTITUTO STATALE IPIAS "ORAZIO OLIVIERI"
Viale Mazzini 65, Tivoli 00019 - Tel. 06.121125445 - rmri08000g@istruzione.it - www.ipiasolivieri.edu.it

PIANO USCITE EMERGENZA

P2 - PIANO SECONDO

D.S. Prof.ssa ANNA VICIDOMINI - RSPP Dott. Ing. Pierangelo D'Antonio

SETTEMBRE 2020

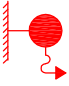



P3

PIANTA PIANO TERZO



Stazione
F.S. 

LEGENDA

-  IDRANTE A MURO UNI 45
-  ESTINTORE PORTATILE
-  PORTA REI 120
-  QUADRO ELETTRICO

 TU SEI QUI

CHIAMATA DI EMERGENZA

112

ISTITUTO STATALE IPIAS "ORAZIO OLIVIERI"
Viale Mazzini 65, Tivoli 00019 - Tel. 06.121125445 - rmri08000g@istruzione.it - www.ipiasolivieri.edu.it

PIANO USCITE EMERGENZA

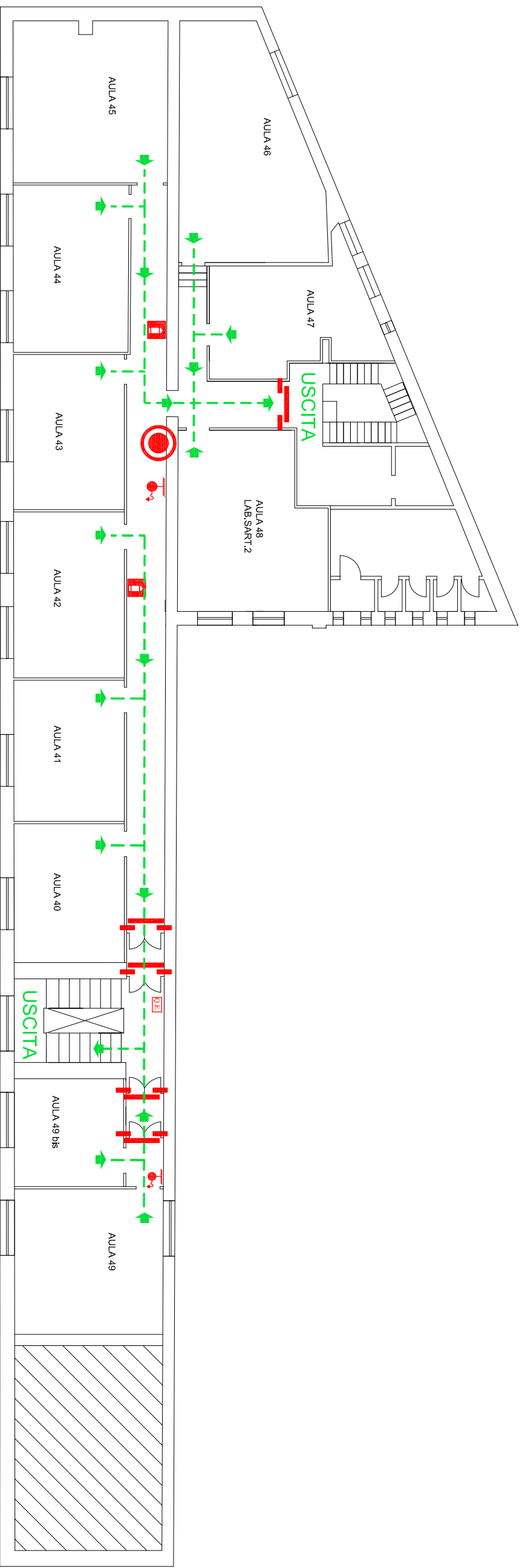
P3 - PIANO TERZO

D.S. Prof.ssa ANNA VICIDOMINI - RSPP Dott. Ing. Pierangelo D'Antonio

SETTEMBRE 2020

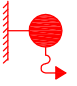



P4

PIANTA PIANO QUARTO



Stazione
F.S. 

LEGENDA

-  IDRANTE A MURO UNI 45
-  ESTINTORE PORTATILE
-  PORTA REI 120
-  QUADRO ELETTRICO

 TU SEI QUI

CHIAMATA DI EMERGENZA

112

ISTITUTO STATALE IPIAS "ORAZIO OLIVIERI"

Viale Mazzini 65, Tivoli 00019 - Tel. 06.121125445 - rmri08000g@istruzione.it - www.ipiasolivieri.edu.it

PIANO USCITE EMERGENZA

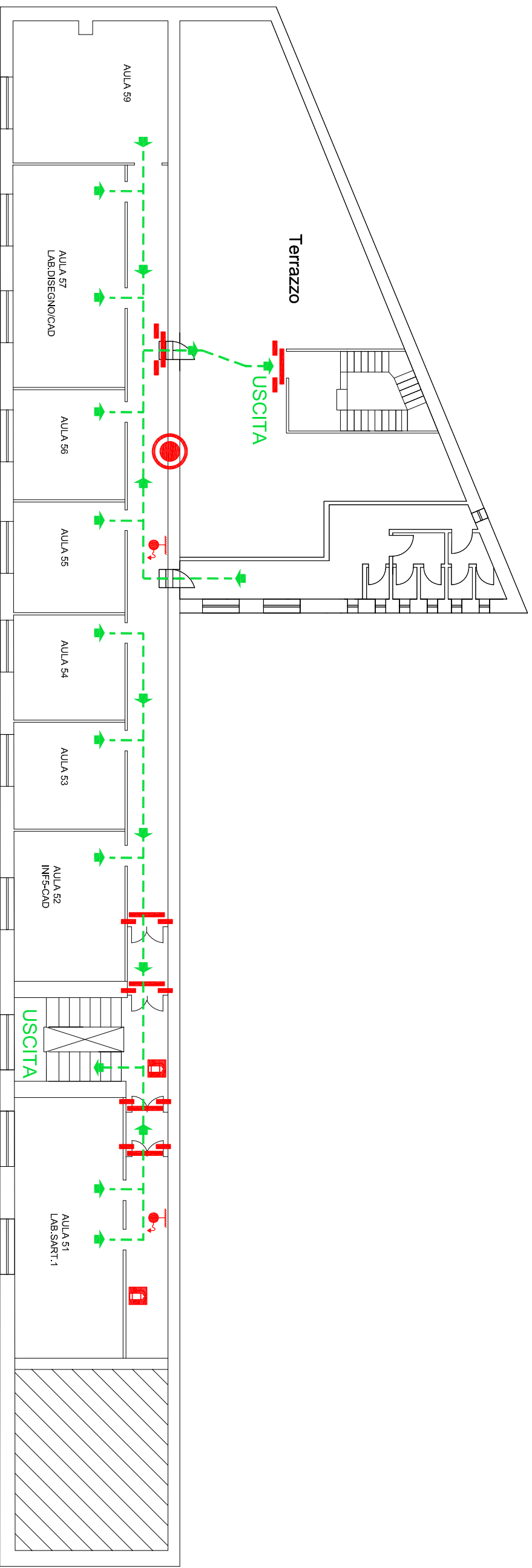
P4 - PIANO QUARTO

D.S. Prof.ssa ANNA VICIDOMINI - RSPP Dott. Ing. Pierangelo D'Antonio

SETTEMBRE 2020





P5

PIANTA PIANO QUINTO



Stazione
F.S. 

LEGENDA

-  IDRANTE A MURO UNI 45
-  ESTINTORE PORTATILE
-  PORTA REI 120
-  QUADRO ELETTRICO

 TU SEI QUI

CHIAMATA DI EMERGENZA

112

ISTITUTO STATALE IPIAS "ORAZIO OLIVIERI"
Viale Mazzini 65, Tivoli 00019 - Tel. 06.121125445 - rmri08000g@istruzione.it - www.ipiasolivieri.edu.it

PIANO USCITE EMERGENZA

P5 - PIANO QUINTO

D.S. Prof.ssa ANNA VICIDOMINI - RSPP Dott. Ing. Pierangelo D'Antonio

SETTEMBRE 2020